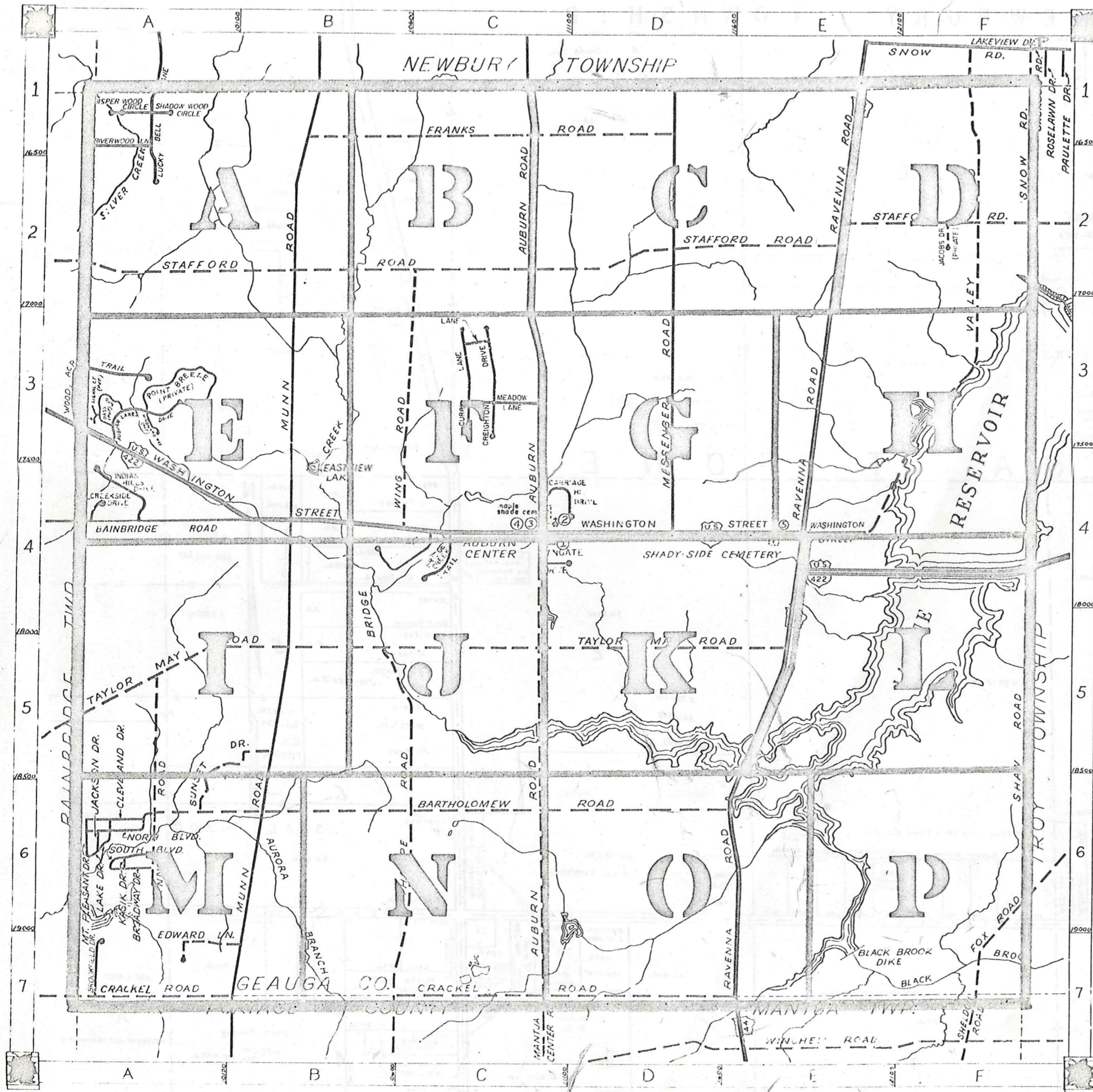


# ROAD INDEX



<b>A</b> AUBURN ROAD	<b>J</b> C1-C1 JACKSON DRIVE JACOBS DRIVE (PVT)	<b>S</b> A6 SHAW ROAD F2 SNOW ROAD A6 SOUTH BLVD. A2-E2 STAFFORD RD. B5-A6 SUNSET DRIVE A1 SHADOW WOOD CIRCLE
<b>B</b> BAINBRIDGE ROAD BARTHOLOMEW RD. BROADWAY DRIVE BROOKFIELD DRIVE SILVER CREEK TR.	<b>K</b> A4 KASIK DRIVE A6 A6 A7 C4	<b>T</b> A5-E5 TAYLOR MAY RD. B5-B7 THORPE ROAD C3 TIMBER LN
<b>C</b> CLEVELAND DRIVE CRACKEL ROAD CREIGHTON DR CITY LN CREEKSIDE DR. CARRIAGE HILL	<b>L</b> A6 LAKE DRIVE A1 LUCKY BELL LN C4 LAKEVIEW TR.	<b>U</b>
<b>D</b>	<b>M</b> E1-D4 MESSENGER RD. A6 MT. PLEASANT DR. B1-B7 MUNN RD. C3 MEADOW LN	<b>V</b> F1-E4 VALLEY ROAD
<b>E</b> EDWARD LANE	<b>N</b> A7 NORTH BLVD	<b>W</b> A3-E4 WASHINGTON ST. C3-C4 WING ROAD A1 WHISPER WOOD CIRCLE A3 WOOD ACRE TR. A2 WINGATE DRIVE
<b>F</b> FOX ROAD FRANKS ROAD	<b>O</b> F6-F7 B1-D1	<b>X</b>
<b>G</b>	<b>P</b>	<b>Y</b>
<b>H</b>	<b>Q</b> QUINN ROAD	A5-A6 <b>Z</b>
<b>I</b> INDIAN HILLS DR	<b>R</b> E1-E7 RAVENNA RD. A1 RIVERWOOD LN.	

- ① AUBURN ELEM. SCHOOL
- ② AUBURN COMMUNITY CHURCH
- ③ AUBURN TOWN HALL
- ④ AUBURN VOL. FIRE DEPT.
- ⑤ STATE HIGHWAY GARAGE (SUB-STATION)

## AUBURN TOWNSHIP

SCALE: 1" = 2000'

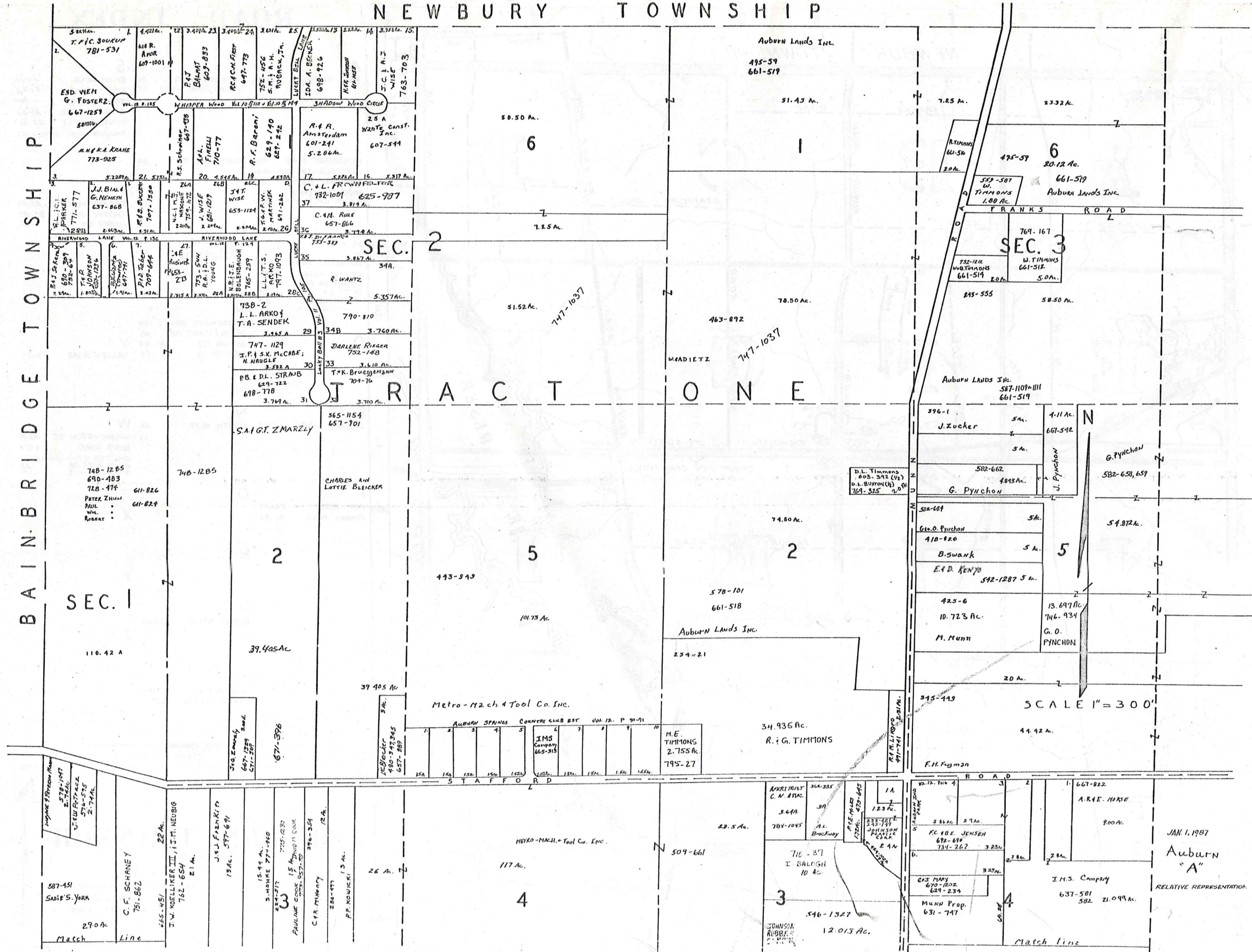
CERT. E. PHILIPS  
GEAUGA COUNTY ENGINEER

- UNPAVED ROAD
- PAVED ROAD
- TOWNSHIP LINE
- COUNTY LINE



NEWBURY TOWNSHIP

BAINBRIDGE TOWNSHIP



JAN. 1, 1987  
Auburn  
"A"  
RELATIVE REPRESENTATION

SCALE 1" = 300'

Metro-Mach & Tool Co. Inc.

R. G. TIMMONS  
34.936 Ac.

SEC. 1

SEC. 2

SEC. 3

TRACT ONE

6

1

6

2

5

2

5

4

3

4

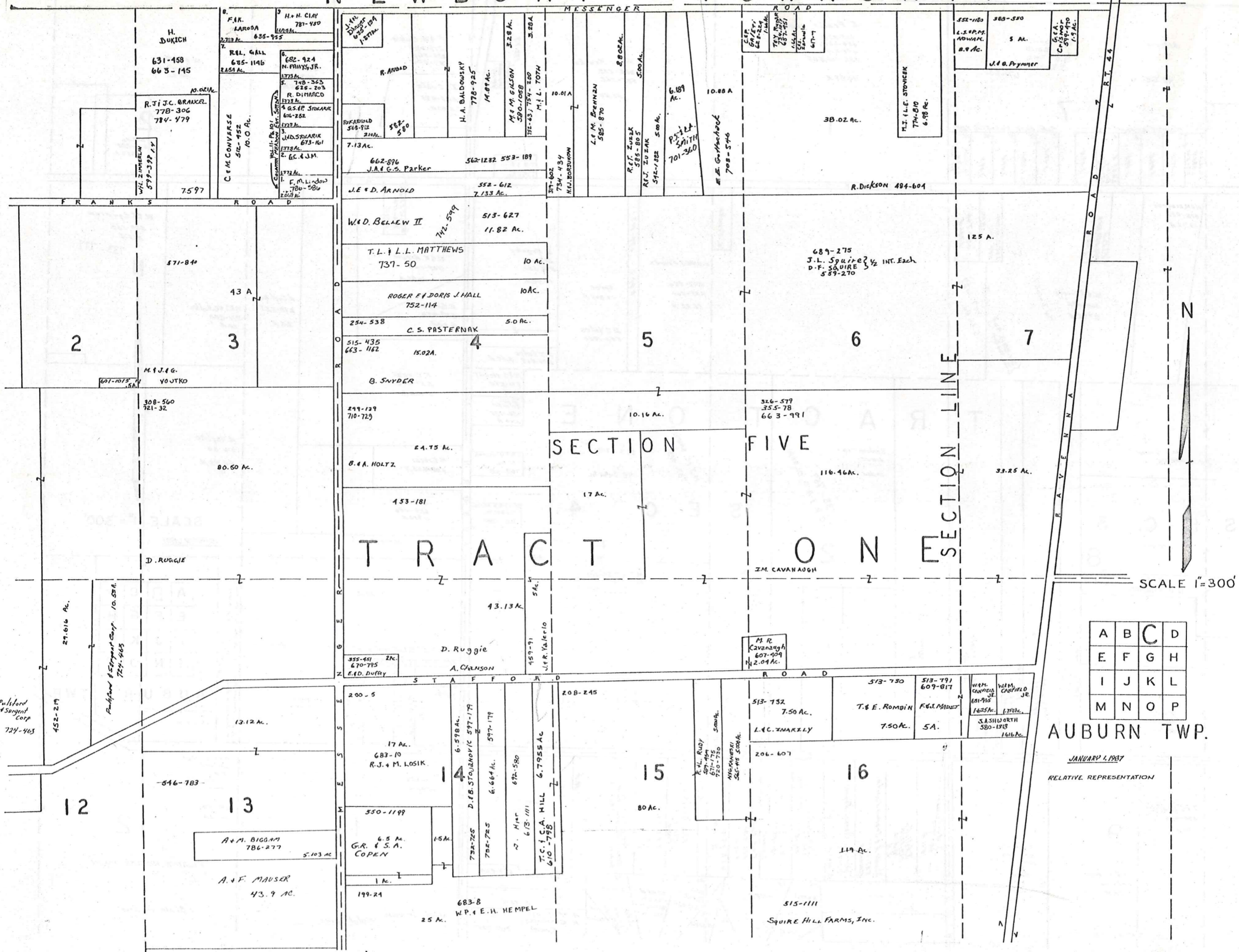
587-451  
SABIE S. YORK  
29.0 Ac.  
C. F. SCHAFNEY  
751-862  
22 Ac.  
J. W. KOELLIKER III, J. M. NEUBIG  
762-654  
21 Ac.  
J. V. FRANKI, P.  
597-671  
13 Ac.  
S. HOMER 771-980  
24 Ac.  
PAULINE COOK 775-1239  
15 Ac.  
C. R. MURPHY 376-354  
12 Ac.  
P. P. KOVICI 280-477  
26 Ac.

50.50 Ac.  
6  
7.25 Ac.  
7.25 Ac.  
51.52 Ac.  
747-1037  
51.52 Ac.  
747-1037  
78.50 Ac.  
463-892  
747-1037  
74.60 Ac.  
578-101  
661-518  
Auburn Lands Inc.  
254-21  
34.936 Ac.  
R. G. TIMMONS  
795-27  
Metro-Mach & Tool Co. Inc.  
Auburn Springs Country Club Bldg  
Vol. 12, P. 70-71  
IMS Company  
665-315  
M.E. TIMMONS  
2.755 Ac.  
795-27  
117 Ac.  
Metro-Mach & Tool Co. Inc.  
509-661

Auburn Lands Inc.  
495-59  
661-519  
51.43 Ac.  
7.25 Ac.  
23.32 Ac.  
475-59  
20.12 Ac.  
661-519  
Auburn Lands Inc.  
559-507  
W. TIMMONS  
1.88 Ac.  
FRANKS ROAD  
769-167  
W. TIMMONS  
661-512  
5.0 Ac.  
732-122  
W. TIMMONS  
661-514  
2.0 Ac.  
243-555  
58.50 Ac.  
Auburn Lands Inc.  
587-1109+1111  
661-519  
396-1  
J. Zucker  
5 Ac.  
4.11 Ac.  
667-542  
5 Ac.  
582-662  
4843 Ac.  
G. PYNCHON  
54.872 Ac.  
582-658, 659  
54.872 Ac.  
502-684  
Geo. O. Pynchon  
410-920  
5 Ac.  
B. Swank  
5 Ac.  
E. D. KENYON  
542-1287 5 Ac.  
425-6  
10.723 Ac.  
M. Munn  
13.697 Ac.  
746-934  
G. O. PYNCHON  
20 Ac.  
345-449  
44.92 Ac.  
F. H. Ferguson  
667-822  
A. R. E. HORSE  
800 Ac.  
I. H. S. Campy  
637-581  
582 21.099 Ac.  
Match line



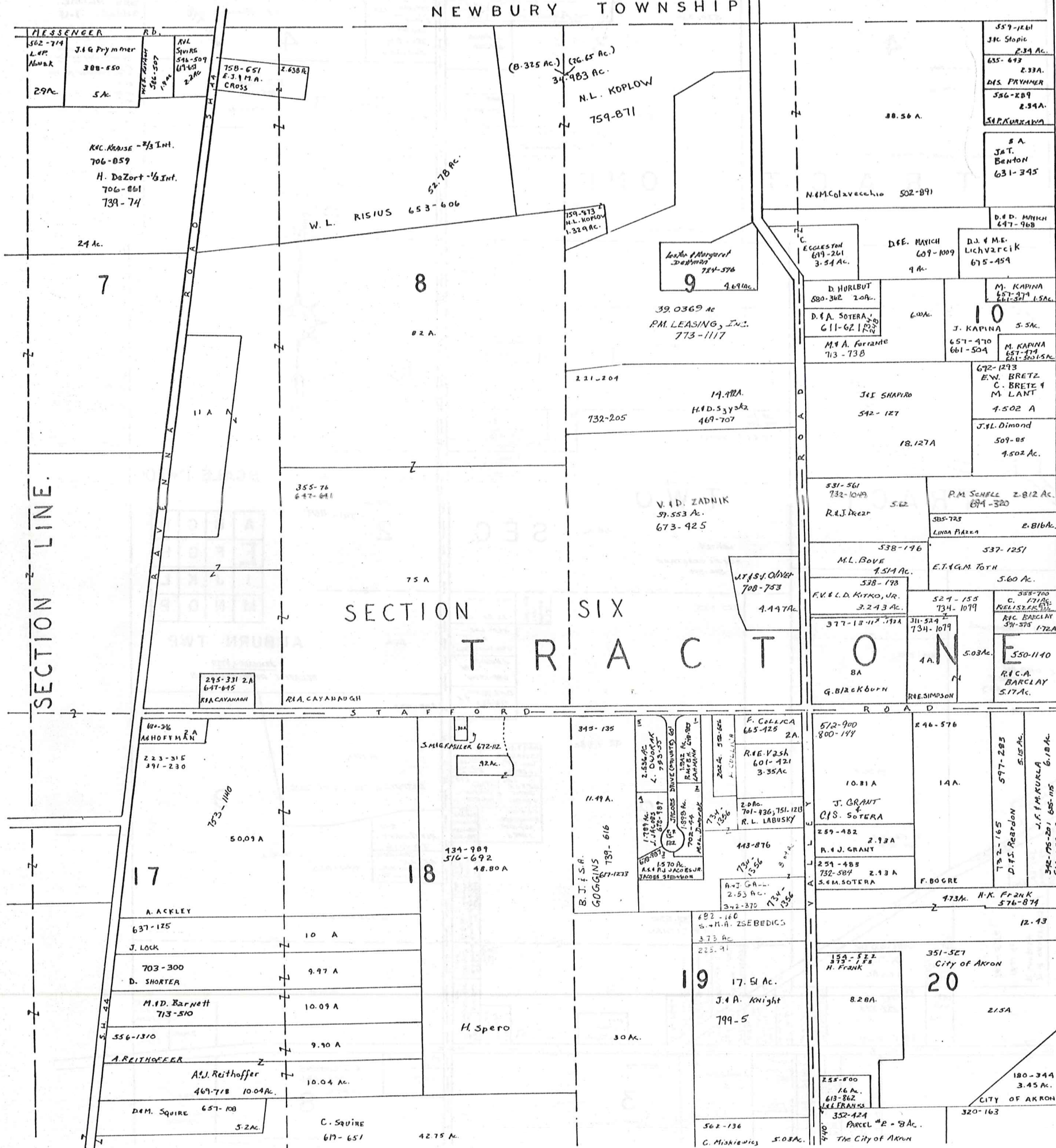
# NEWBURY TOWNSHIP



A	B	C	D
E	F	G	H
I	J	K	L
M	N	O	P

**AUBURN TWP.**

**JANUARY 1, 1937**  
RELATIVE REPRESENTATION



BURTON TOWNSHIP

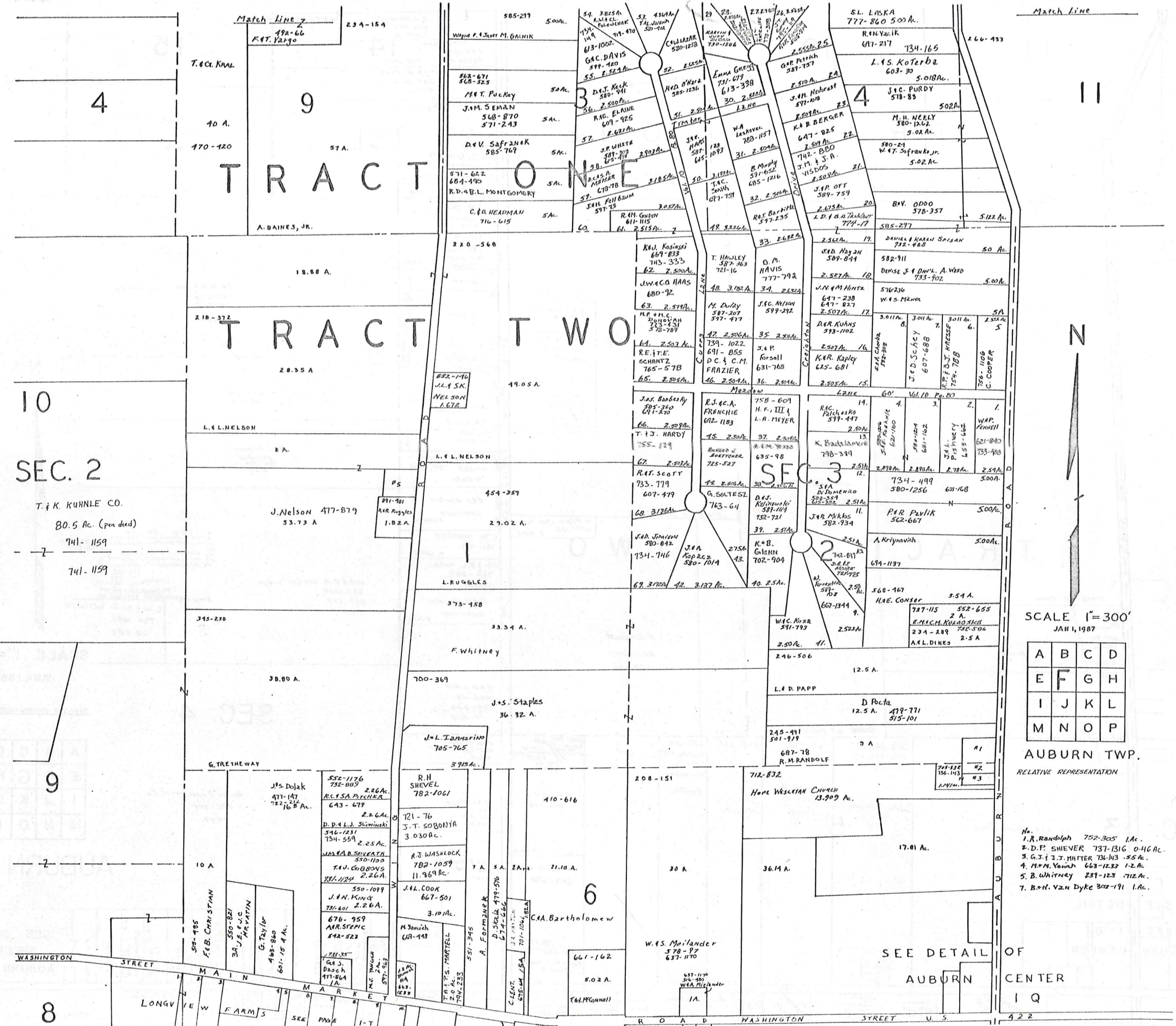
SCALE 1" = 300'

JANUARY 1, 1997  
RELATIVE REPRESENTATION

A	B	C	D
E	F	G	H
I	J	K	L
M	N	O	P

AUBURN TWP.





# TRACT ONE

# TRACT TWO

SEC. 2

T. & K. KUHNLE CO.  
80.5 Ac. (pen deed)  
741-1159  
741-1159

Match Line

SCALE 1" = 300'  
JAN 1, 1987

A	B	C	D
E	F	G	H
I	J	K	L
M	N	O	P

AUBURN TWP.  
RELATIVE REPRESENTATION

- No. 1. R. Randolph 752-305 1.1c.
- 2. D. P. Shiever 737-1316 0.46c.
- 3. G. J. J. Matter 736-143 5.5c.
- 4. M. M. Vanich 663-1237 1.2c.
- 5. B. Whitney 237-123 712c.
- 7. B. H. Van Dyke 302-191 1.1c.

SEE DETAIL OF  
AUBURN  
CENTER  
I Q

WASHINGTON STREET

LONGVIEW FARM

MAIN STREET

MARKET STREET

SEC. 2

LONGVIEW FARM

MARKET STREET

SEC. 2

WASHINGTON STREET

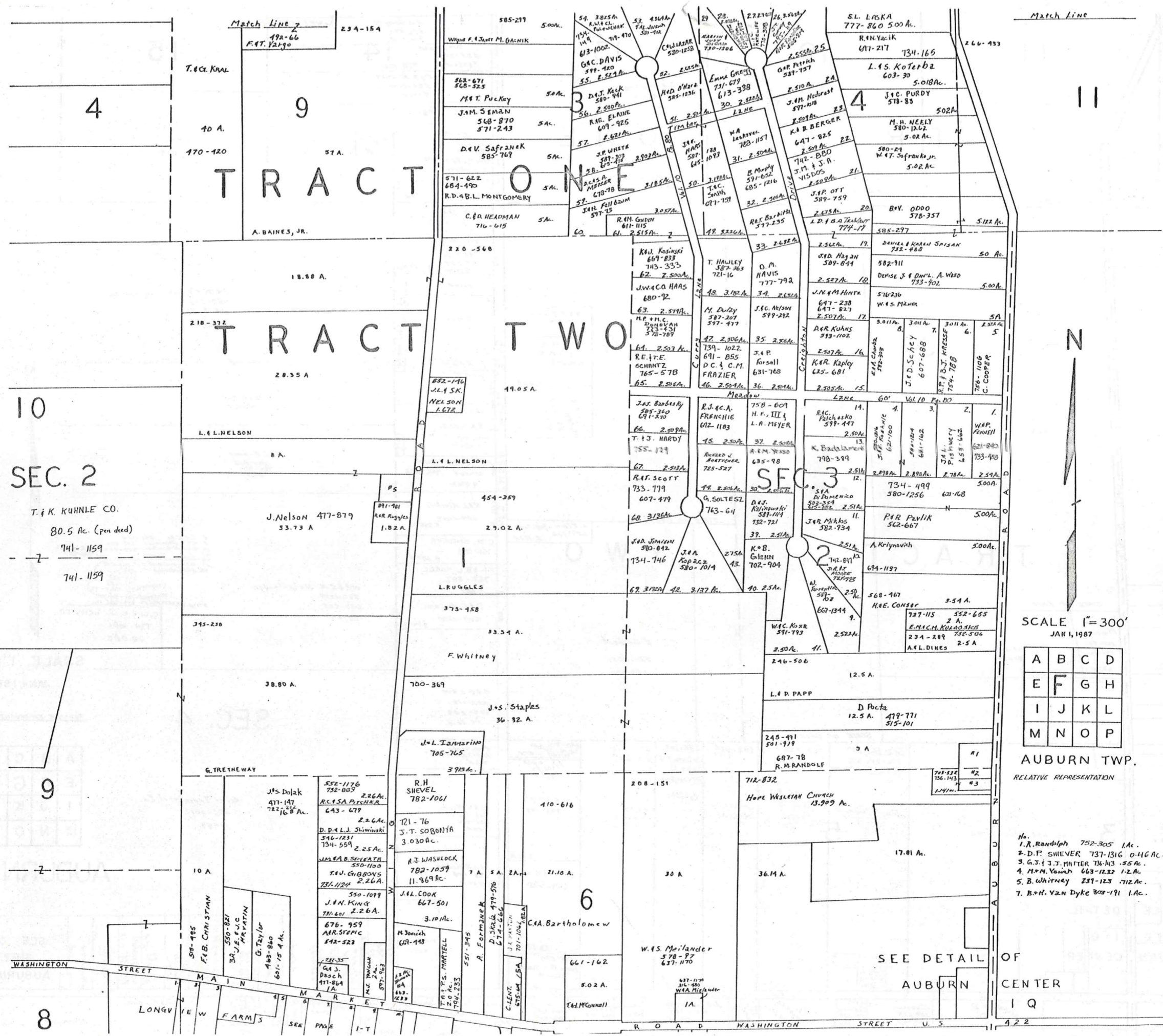
U.S.

WASHINGTON STREET

U.S.

WASHINGTON STREET

U.S.



Match Line

SCALE 1"=300'  
JAN 1, 1987

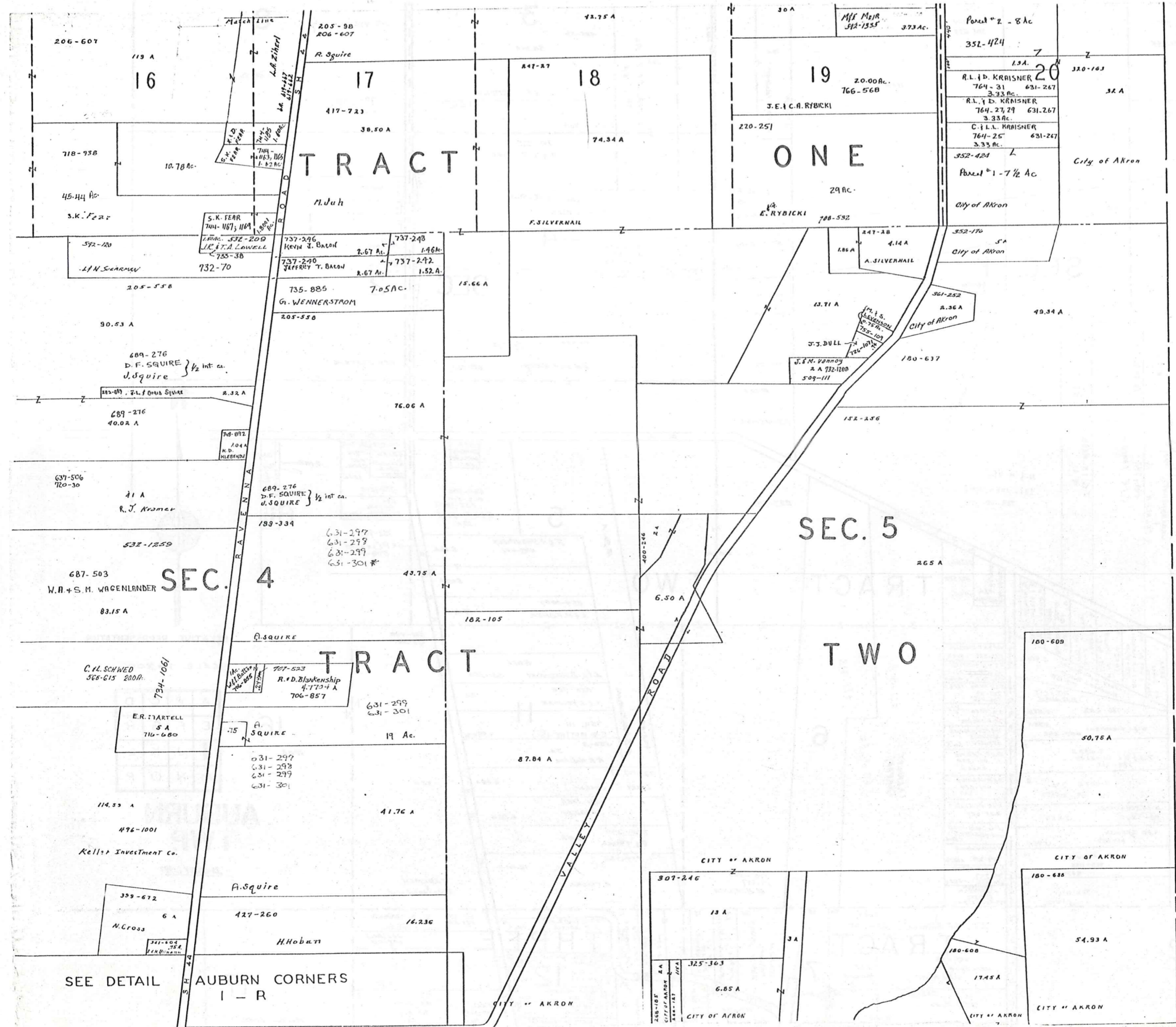
A	B	C	D
E	F	G	H
I	J	K	L
M	N	O	P

AUBURN TWP.  
RELATIVE REPRESENTATION

- No. 1. R. Randolph 752-305 1 Ac.
- 2. D. P. SHEVER 737-1316 0.46 Ac.
- 3. G. J. J. MATTER 734-43 55 Ac.
- 4. M. N. VANDYKE 663-1232 1.2 Ac.
- 5. B. WHITNEY 231-123 712 Ac.
- 7. B. N. VAN DYKE 302-191 1 Ac.

SEE DETAIL OF  
AUBURN CENTER  
I Q





TROY TOWNSHIP



SCALE 1" = 300'

A	B	C	D
E	F	G	H
I	J	K	L
M	N	O	P

AUBURN TWP.

JANUARY 1, 1927  
RELATIVE REPRESENTATION

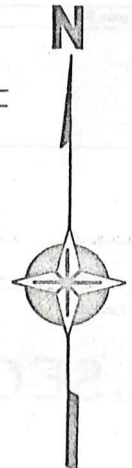
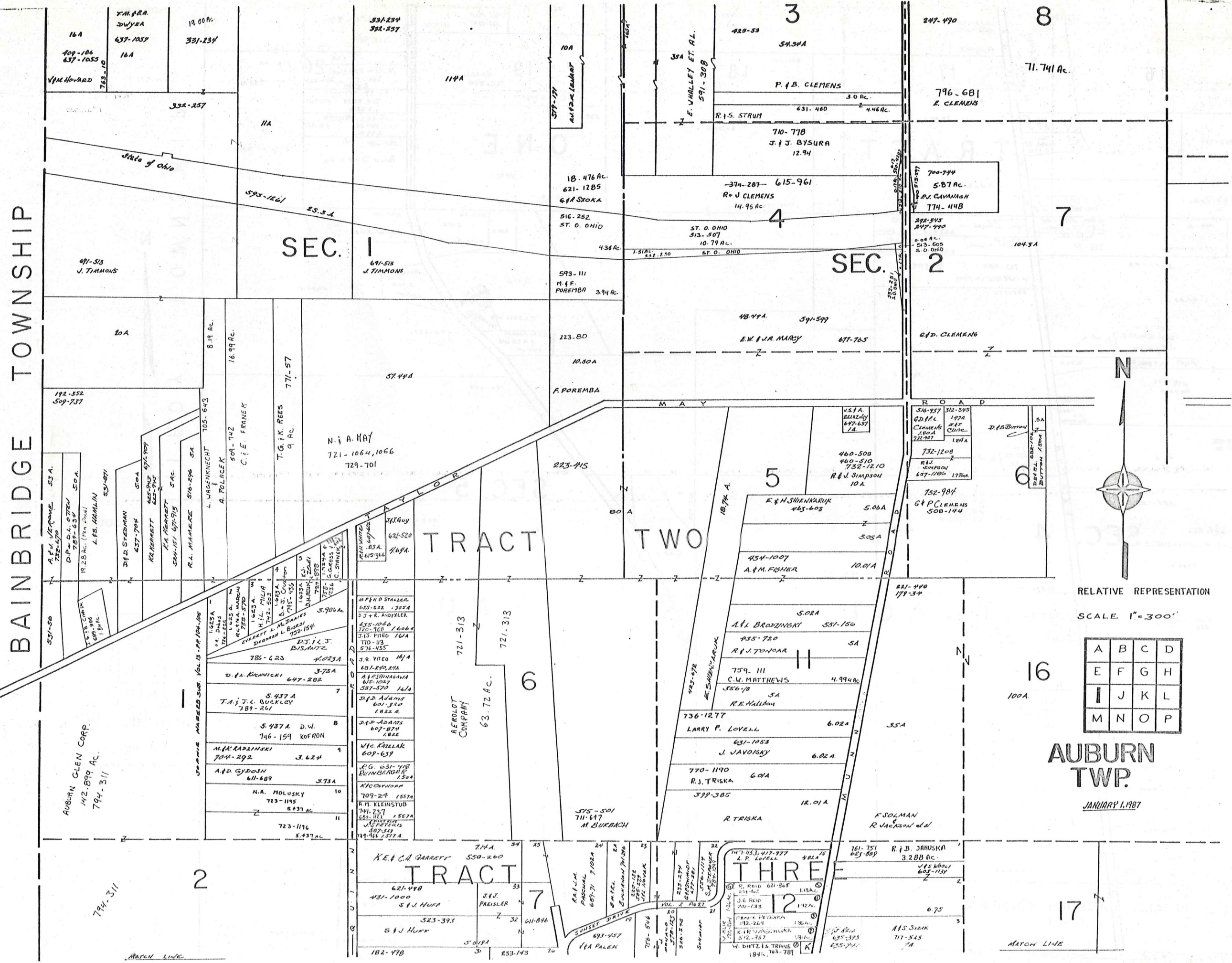
BAINBRIDGE TOWNSHIP

SEC. 1

SEC. 2

TRACT TWO

TRACT THREE



RELATIVE REPRESENTATION  
SCALE 1"=300'

A	B	C	D
E	F	G	H
I	J	K	L
M	N	O	P

AUBURN TWP.

JANUARY 1, 1987

MATCH LINE

MATCH LINE

Match Line

Match Line

74 A

LONGVIEW FARMS  
SEC PG 1-T

427-154  
319-117  
J.E. TAYLOR

SEE DETAIL SHEET I-Q  
AUBURN CENTER

8

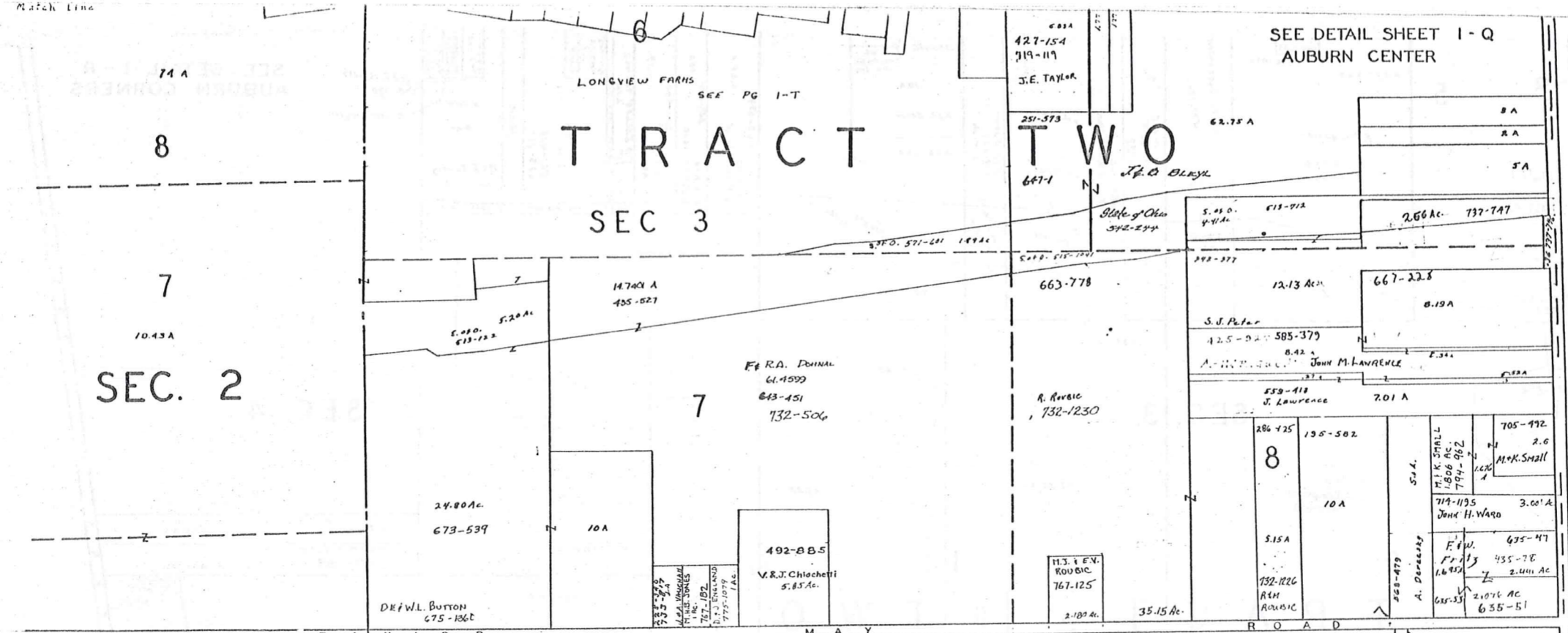
# TRACT TWO

SEC 3

7

# SEC. 2

7



SCALE 1"=300'

A	B	C	D
E	F	G	H
I	J	K	L
M	N	O	P

JANUARY 1, 1987

# AUBURN TWP.

RELATIVE REPRESENTATION

27.60 A  
6  
2.6 Ac.  
39.50 A  
L.W. MAY

24.80 Ac.  
673-539  
10 A  
492-885  
V.R.J. Chiochetti  
5.85 Ac.

573-965  
242-762  
G. HULL  
1.465 A  
2392 A  
643-738  
F.V. SZOKA  
326-546,547  
.50 A

47.50 A  
50 A  
A. DERECSEY

2.175 A  
2.02 A  
A. DERECSEY

221-448  
193-34  
11  
35 A  
F. SAMAN &  
R. JACKSON OWN.

16  
100 A  
B. & A. PERKINS  
501-133  
49.13 Ac.  
D. J. PERKINS  
453-287

TRACT THREE  
21  
47.065 Ac.  
E.R. & J.A. BROWN  
693-1301  
5.322 Ac.  
E. J. BROWN  
1-4420  
693-1299  
46.12 Ac.  
502-436  
E.W. & M. BROWN  
48.9 A  
607-995  
520-115  
E. Andrews et al

26  
100 A  
City of Akron

23 A  
31  
193-56  
352-426  
60 A  
32  
C. SMYKO

12

17  
D.A. PERKINS  
184

22  
50 A

27  
100 A

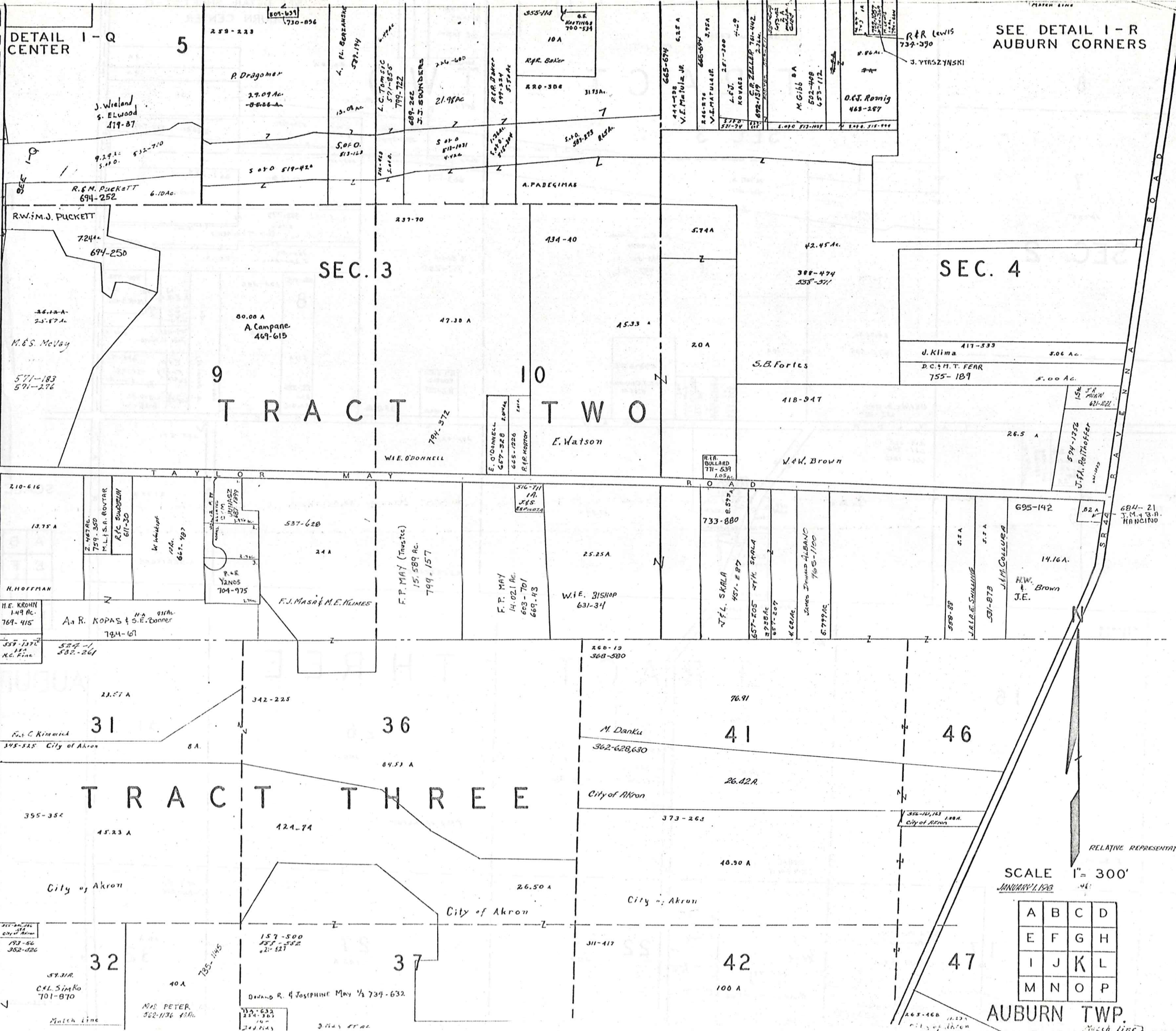
32

MATCH LINE

SEE AUBURN

DETAIL I-Q CENTER

SEE DETAIL I-R AUBURN CORNERS



SCALE 1" = 300'

JANUARY 1, 1928

A	B	C	D
E	F	G	H
I	J	K	L
M	N	O	P

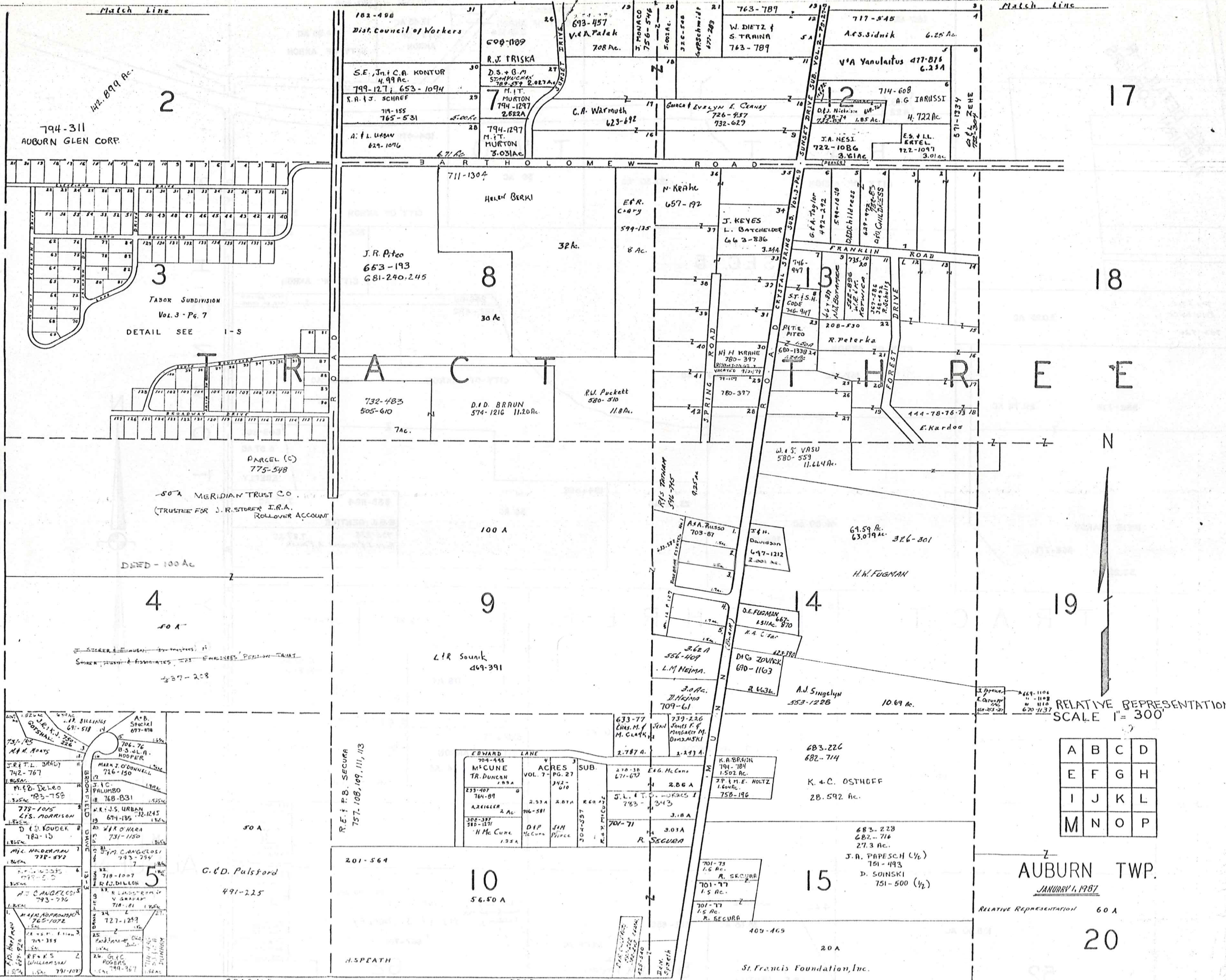
AUBURN TWP.



B A I N B R I D G E T O W N S H I P

Match Line

Match Line



794-311  
AUBURN GLEN CORP.

3  
TADOR SUBDIVISION  
VOL. 3 - Pg. 7  
DETAIL SEE 1-S

PARCEL (C)  
775-548  
-50 A MERIDIAN TRUST CO.  
(TRUSTEE FOR J.R. STODER I.R.A.  
ROLLOVER ACCOUNT

4  
50 A  
DRED - 100 AC  
50 A

5  
C.D. Pulsford  
491-225

182-498  
Dist. Council of Workers  
693-457  
V.A. Falak  
708 Ac.  
R.J. TRISKA  
D.S. + B.M.  
S.M. KUCYK  
799-1271 653-1094  
M.I.T. MURTON  
794-1297  
2.822A  
794-1297  
M.I.T. MURTON  
3.031AC  
763-789  
W. DIETZ +  
S. TRAINA  
763-789  
717-545  
A.S. Sidnik  
6.25 Ac.  
V.A. Yanulatus 477-816  
6.25A  
714-608  
A.G. IARUSSI  
4.722Ac  
J.A. NESI  
722-1086  
3.61Ac  
ES + LL  
ERTEL  
722-1097  
3.01Ac

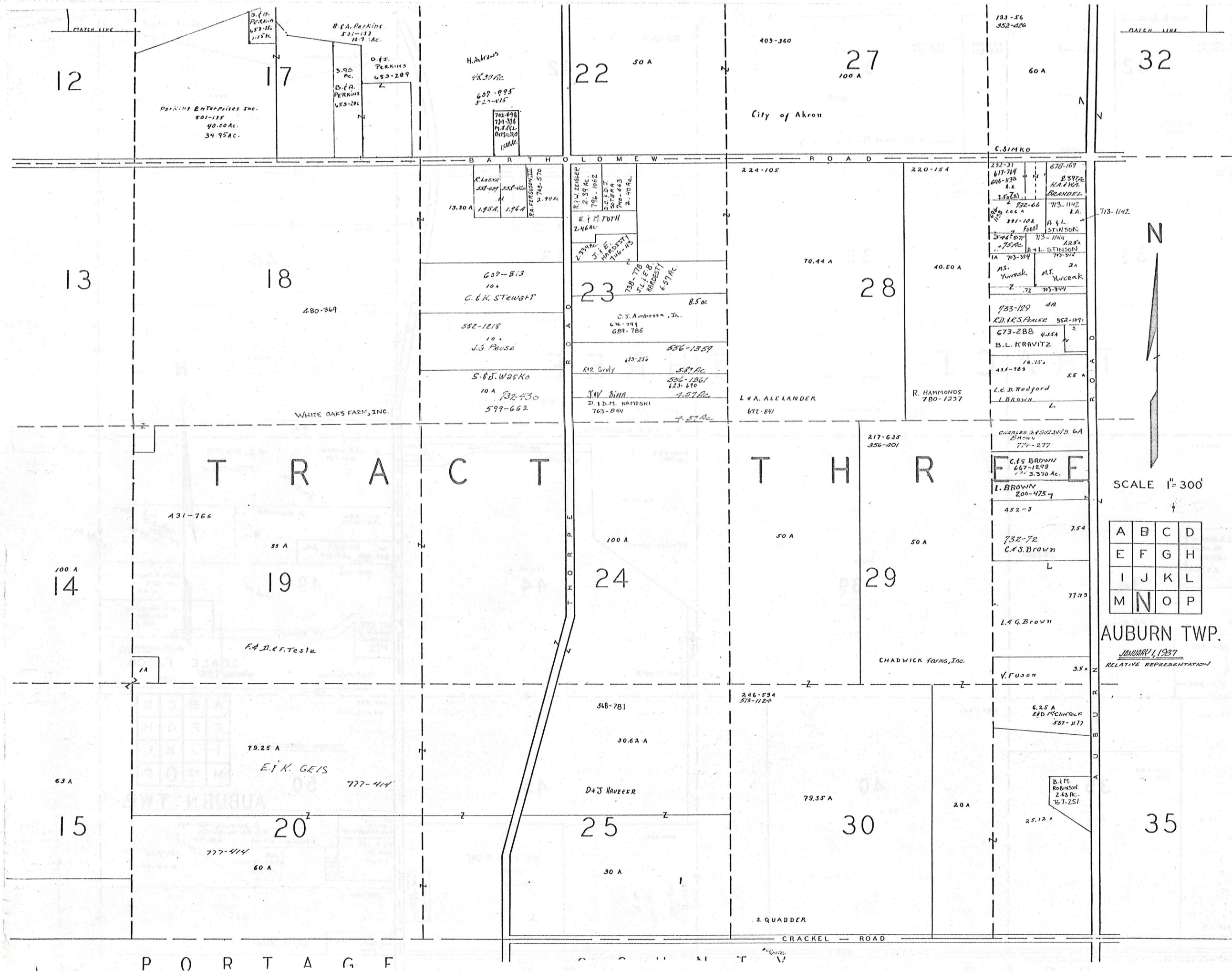
8  
J.R. Piteo  
653-193  
681-240,245  
32 Ac.  
711-1304  
HELEN BERK  
8 Ac.  
E.R. CARY  
594-125  
N. KRANE  
657-192  
J. KEYES  
L. BATCHELOR  
662-886  
R. Peterka  
208-530  
N.H. KRANE  
780-397  
R.L. Puckett  
580-510  
11.8 Ac.  
732-483  
505-610  
7 Ac.  
D.D. BRAUN  
574-1216  
11.20 Ac.

9  
L.R. Souik  
469-391  
100 A  
H.N. FUGMAN  
69.59 Ac.  
63,019 Ac.  
326-301  
A.A. Russo  
703-87  
J.H. Davidson  
697-1212  
2,001 Ac.  
D.E. FUGMAN  
1,511 Ac. 870  
H.A.C. FAR  
D.C. ZAVACK  
690-1103  
A.J. Singelyn  
553-1228  
10.69 Ac.

10  
56.50 A  
H.SPEATH  
201-564  
EDWARD LANE  
704-445  
M.CUNE  
TR. DUNCAN  
VOL. 7 - PG. 27  
ACRES 342.618  
SUB. 2.074  
RECON. 2.074  
DIP McCune  
JAM PIERCE  
709-71  
R. SECURA  
633-77  
EMAS M. F.  
M. CLARK  
2.787 A.  
739-226  
JAMES F. F.  
MARGARET M.  
DOMZANSKI  
2.247 A.  
K.A. BRAUN  
794-784  
1,502 Ac.  
J.P. M.E. HOLTZ  
1,600 Ac.  
758-196  
683-226  
682-714  
K. & C. OSTHOFF  
28,592 Ac.  
683-228  
682-716  
27.3 Ac.  
J.R. PAPESCH (1/2)  
781-493  
D. SOINSKI  
751-500 (1/2)

17  
18  
19  
20  
RELATIVE REPRESENTATION  
SCALE 1" = 300'  
AUBURN TWP.  
JANUARY 1, 1987  
RELATIVE REPRESENTATION 60 A

A	B	C	D
E	F	G	H
I	J	K	L
M	N	O	P



12

17

22

27

32

13

18

23

28

14

19

24

29

15

20

25

30

35

T R A C T

T H R

P O R T A G E

C R A C K E L R O A D



SCALE 1" = 300'

A	B	C	D
E	F	G	H
I	J	K	L
M	N	O	P

AUBURN TWP.

JANUARY 1, 1937  
RELATIVE REPRESENTATION

Match Line

Match Line

193-56  
302-426  
32  
60 A  
CAL. SIMKO  
701-870

735-1146  
40 A  
MRS PETER  
562-1136 40A.

854-389  
734-632  
10 A  
D. J. MAY

157-500  
503-878  
37  
80 Ac.  
DONALD R. JOSEPHINE MAY 732-632 1/3  
H. MAY ETAL

311-417  
42  
100A.  
City of Akron

265-460  
11.88 A  
CITY OF AKRON

208-226  
210-106  
47  
241.88 A

BARTHOLOMEW ROAD

532-649  
532-651  
33  
71.95 A  
TRACT THREE

220-01  
206-544  
38  
100 A  
713-1074  
J. J. SIMAN  
R. E. KLEINMAN  
740-178\*

460-417  
5A  
City of Akron

393-405  
43  
88.40A  
713-1077  
698-298  
J. J. SIMAN  
R. E. K. KLEINMAN

232-477  
48  
7188 A  
CITY OF AKRON

200-473  
34  
80.255A  
L. G. Brown

243-252  
591-150  
44  
20.34 A  
713-1070  
2.44 A.  
GEAUGA COUNTY  
J. J. SIMAN

417-482  
576-1079  
49  
9 A  
K. BONNER

591-753  
2.44 A.  
R.A. SMITH  
776-160 \*

667-546  
667-814  
49  
34.65 Ac.  
W. BONNER 3A.  
667-814

709-215  
711-1254  
16.39 Ac.  
S. S. SMITH

737-597  
Mark R. &  
Suzanne A.  
Voll  
2.4c.  
60' Easement

711-1254  
6.11 A  
SYLVIA S. SMITH

633-000  
5.41 A  
J.L. SCHERING

777-978  
B.J. ANDERSON

200-473  
34  
80.255A  
L. G. Brown

243-252  
591-150  
44  
20.34 A  
713-1070  
2.44 A.  
GEAUGA COUNTY  
J. J. SIMAN

417-482  
576-1079  
49  
9 A  
K. BONNER

591-753  
2.44 A.  
R.A. SMITH  
776-160 \*

667-546  
667-814  
49  
34.65 Ac.  
W. BONNER 3A.  
667-814

709-215  
711-1254  
16.39 Ac.  
S. S. SMITH

737-597  
Mark R. &  
Suzanne A.  
Voll  
2.4c.  
60' Easement

711-1254  
6.11 A  
SYLVIA S. SMITH

633-000  
5.41 A  
J.L. SCHERING

777-978  
B.J. ANDERSON

SCALE 1" = 300'  
January 4, 1987

123-443  
10 A  
35  
40 A  
217-635  
336-401  
16 A  
CHADWICK Farms, Inc.

285-206  
40  
15 A  
E. ALMY

307-489  
3.23 Ac.  
S.D. & L.L. GIBBY  
760-15

735-482  
W. B. HEAD  
732-450  
696-247  
25 Ac.

198-375  
W. Rodovich  
625-51  
625-55  
50  
9.2775 Ac.  
G. Henry (by) 625-435  
R.J. Reithoff (for City)  
625-437  
J. Reithoff 625-419  
J. P.A. REITHOFFER  
687-748  
6.030 Ac.  
531-826  
B.92 Ac.

308-244  
2.3 A  
City of Akron

581-185  
Just Interest AA  
Hood

A	B	C	D
E	F	G	H
I	J	K	L
M	N	O	P

RELATIVE REPRESENTATION

AUBURN TWP.

DODD ROAD



# AUBURN TP.

## [CENTER] TRACT 2 SECTION 3

E. & W. Richardson  
4.71 Ac. 574-563  
731-1241

D.M.C.A. COOK  
792-791

J.H. REUWER  
787-1043

R. CANTON  
546-180

13.10 Ac.

798-1075

LOT 6

24.15 Ac.  
P.R. CARLETON

723-372  
692-1331

798-1075

Auburn Township  
Trustees  
509-631 719A

L. Lee  
722-310

L. Ordovich  
671-68

E. E. FONTANELLE  
206-152  
597-1200

W.L. HEIN  
753-192

1.21 Ac.

J.E. Weber

F.L. ST. RYMER  
755-1116

F.L. TALSZ  
797-20

FEDERAL SAV. & LOAN  
661-356  
722-310

272-255  
AUBURN TWP TRUST  
2.56 Ac.

CEMETERY  
8-345

CARRIAGE HILL DRIVE

FEDERAL SAV. & LOAN  
1-24

R.S. DELPS  
647-1179

A.L. HILL  
789-735

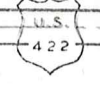
LOT 5

370-136

2.54 A

571-751  
732-1232  
G.F.J. KROHN

MAIN MARKET ROAD



WASHINGTON STREET



177A. Chas. W. McVey  
798-111

648-1088 177A.  
M.P.C. KROHN

153-600  
G.A.I. P.P.P.

739-356 350A.  
GARRETT L. MATHEW & TRUSTEES D. KROHN

505-383 280-89  
M.P.C. KROHN

251-573 J. & B. Bleyl  
730-767 62.75 Ac.

2.0 Ac.  
720-1008

454-11 720-1008  
3 Ac.  
J.E. BELTRAMI & K.J. ROJE

643-346 423-252  
2 Ac. B.A. VIDRA

587-625 1.80 Ac.  
K.W. & M.J. PUCKETT

5110.  
532-78 3.20 Ac.

254-367  
5.10 Ac.  
L. Weber

110-143  
BOARD OF EDUCATION  
2.50 Ac.

423-1073  
653-554 8.16 A

P.E. Toothman

FEDERAL SAVINGS & LOAN INSUR. CORPORATION  
725-671

WINGATE DRIVE VOL. 13, P. 27

3. of O. 532-710 9.06 Ac.

R.J. PUCKETT 694-252 6.10 Ac.

RELATIVE REPRESENTATION  
JANUARY 1, 1987

SCALE 1 in. = 2.5 ch. = 165 ft.



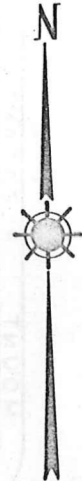
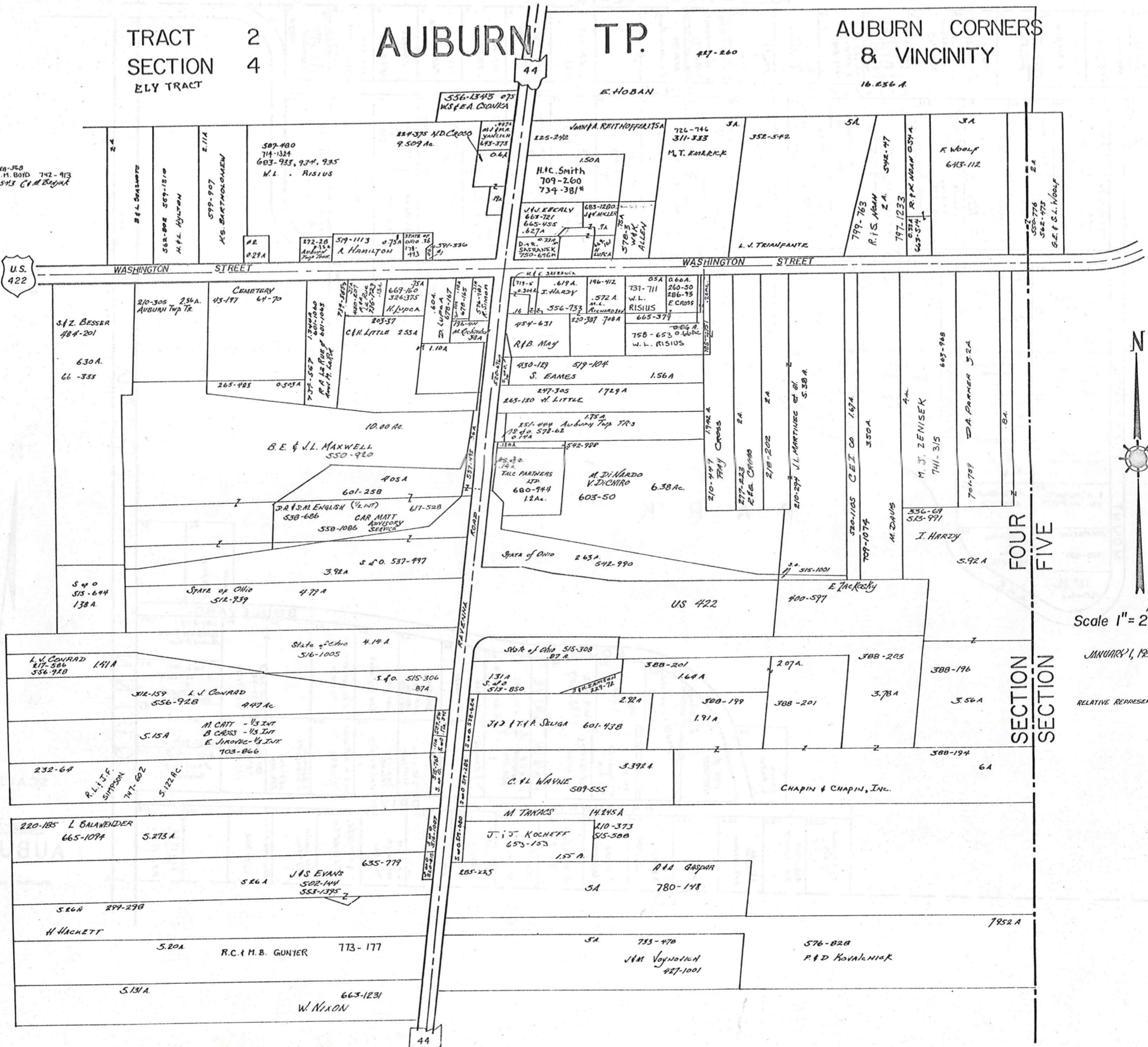
1-Q

TRACT 2  
SECTION 4  
ELY TRACT

# AUBURN TP.

AUBURN CORNERS  
& VICINITY

718-768  
742-913  
753-545  
753-545 C.A.M. BROWN



Scale 1" = 2.5 ch. = 165 ft.

JANUARY 1, 1927

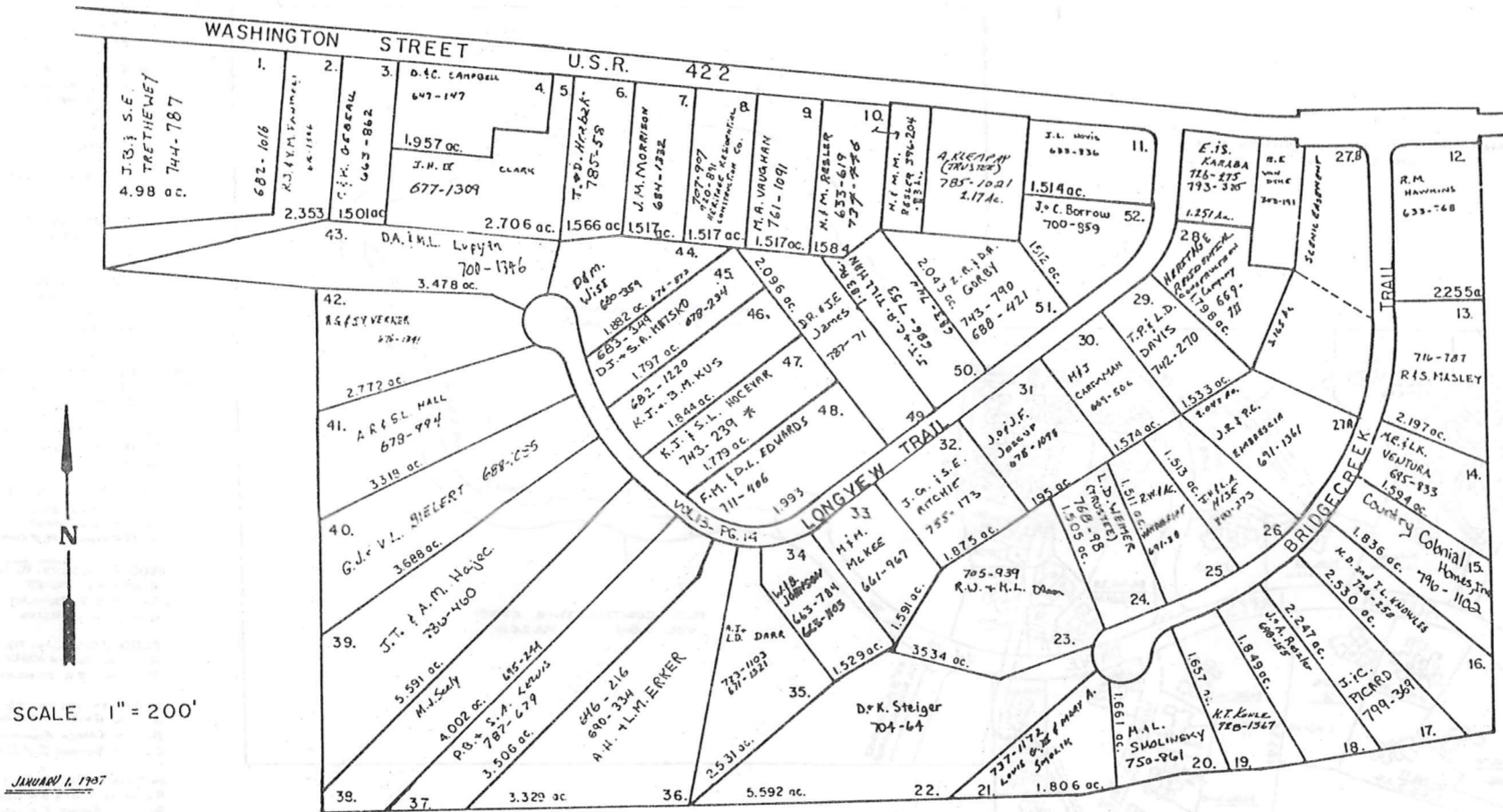
RELATIVE REPRESENTATION

SECTION FOUR  
SECTION FIVE

I-R



AUBURN  
 O.L. 8 SEC. 2  
 O.L. 6 SEC. 3 TRACT 2



S/L 27 RESOR VOL. 14-P6.50

SCALE 1" = 200'

JANUARY 1, 1967

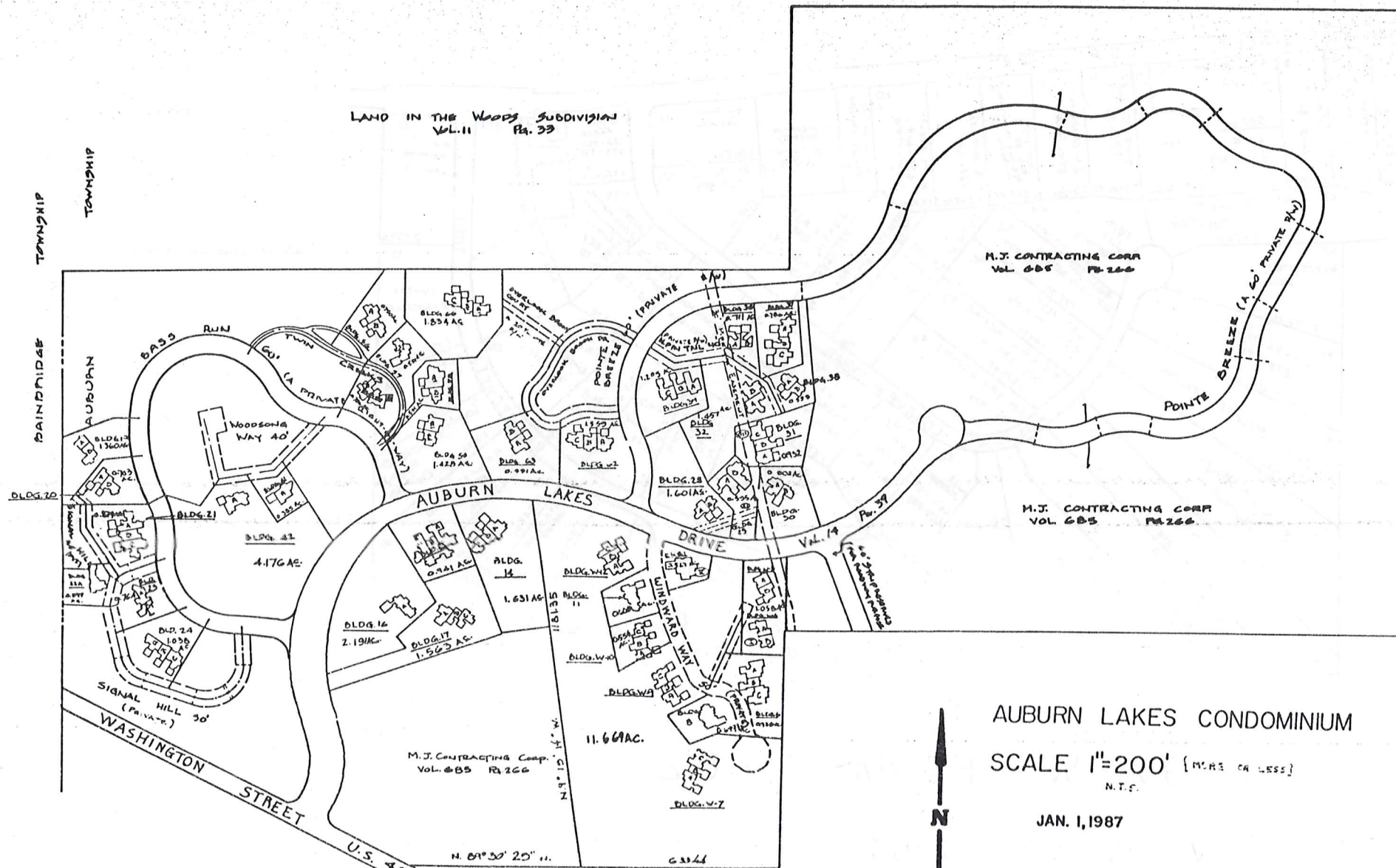
LONGVIEW FARMS 1 & 2

VOL. 12 PP. 62-64

VOL. 13 PP. 13-16

JANUARY 1, 1967  
 RELATIVE REPRESENTATION

LAND IN THE WOODS SUBDIVISION VOL. 11 Pg. 33



AUBURN LAKES CONDOMINIUM

SCALE 1"=200' (MORE OR LESS)

N.T.S.

JAN. 1, 1987



- BLDG. 59: VOL. 16 - PG. 35 TO 42 (TWIN CREEKS)
  - A-282 ~ R.C. & S.C. PIRACANT 787-472
  - B-284 ~ S.C. Thompson 784-1185
- BLDG. 66: VOL. 16 - PG. 35 TO 42 (OVERLOOK BROOK COURT)
  - A-326 ~ G.T. & J. SWINNEY 787-630
  - B-324 ~ J.C. & W.M. COOP. 789-492
  - C-322 ~ C.J. & M.S. GIBLIN 786-1062
- BLDG. 42: VOL. 16 - PG. 43 TO 46 (WOODSONS WAY)
  - A-192 ~ W.E. & M.A. SCHMITT 786-1160
- BLDG. 57: VOL. 16 - PG. 72 TO 76 (TWIN CREEKS)
  - 57-A ~ R.K. Siwik 794-955
- BLDG. 50: VOL. 16 - PG. 82 TO 92 (TWIN CREEKS)
  - A- ~ L.-R. CROUSE 797-765
- BLDG. 56: VOL. 16 - PG. 82 TO 92 (TWIN CREEKS)
  - A- ~ P.-F. KELEHER 797-031
  - B- ~ E.A. LEONETTI 797-752
- BLDG. 63: VOL. 16 - PG. 82 TO 92 (OVERLOOK BROOK DRIVE)
  - A- ~ P.H. FARROW 796-130
  - B- ~ C.K. ZACHEM 796-1050

- BLDG. 62: VOL. 16 - PG. 8 TO 11 (OVERLOOK BROOK DRIVE)
  - A-278 ~ B.J. DWYER & L.C. MULLEN 773-665
  - B-300 ~ W.J. & R.M. KOVAL 774-635
  - C-302 ~ X.F. C. WILSON 773-446
- BLDG. 38: VOL. 16 - PG. 19 TO 23 (N. PINTRAIL)
  - A-180 ~ W.H. & J.M. SCHWARTZ 778-1088
  - B-172 ~ M.-M. BORSZTEW 789-897
- BLDG. 24: VOL. 16 - PG. 29 TO 34 (SIGNAL HILL)
  - A- ~ 782-310
  - B-118 ~ R.A. Green
  - C- ~

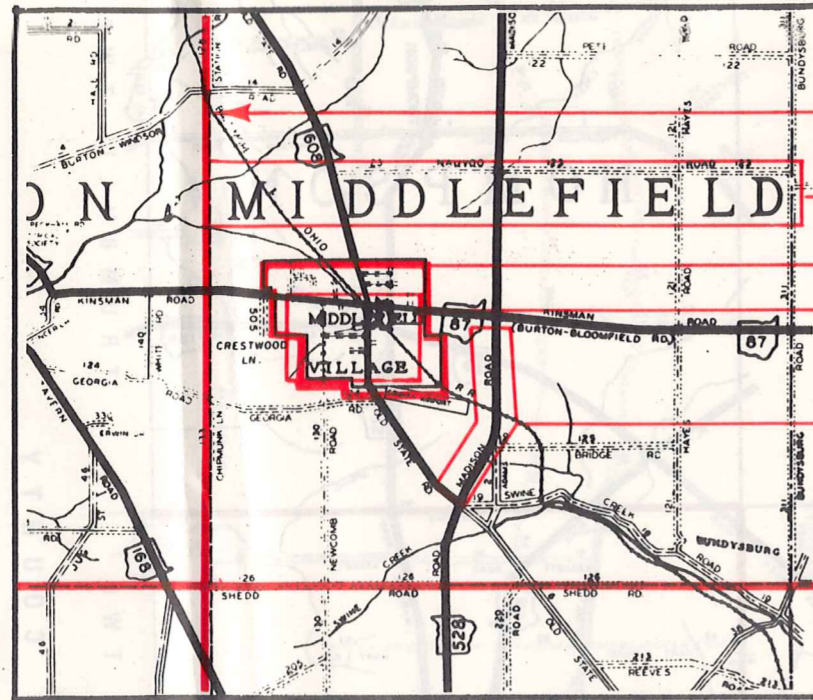
- RELATIVE REPRESENTATION
- BLDG. 16: VOL. 15 - PG. 119 - 127 (CLUB LANE)
    - A-80 ~ R.L. & R. MINTZ 755-792
  - BLDG. 36: VOL. 15 - PG. 119 - 127 (N. PINTRAIL)
    - A-170 ~ D.H. & L.V. MATHEWS 756-779
    - B-172 ~ E.V. GORDON 759-1162
  - BLDG. 37: VOL. 15 - PG. 143 - 146 (NORTH PINTRAIL)
    - A-174 ~ W.H. & W.P. THOMPSON 778-1254
    - B-176 ~ J.A. & M.A. HOLLARS 767-1016
    - C-178 ~ R.S. & Z.M. GILL, JR. 772-863
  - BLDG. 58: VOL. 15 - PG. 149 - 153 (TWIN CREEKS)
    - A-278 ~ D.J. JONES 770-1
    - B-280 ~ S.H. & R.L. SILVER 774-1079

- BLDG. 22: VOL. 15 - PG. 70
  - A- ~ ROBERT J. & KATHY A. MAURER 799-44
- BLDG. 30: VOL. 15 - PG. 70
  - A- ~ E.O. MARCH 740-933
  - B- ~ DONALD H. & MARTHA R. EHLON 737-521
- BLDG. 31: VOL. 15 - PG. 83 (N. PINTRAIL)
  - A-146 ~ E.B. & S.M. GALLO 758-746
  - B- ~ B.A. FRITSCHE 750-777
  - C- ~ G.L. & R.H. RAY 745-1340
- BLDG. 23: VOL. 15 - PG. 91 (SIGNAL HILL)
  - A-112 ~ T.D. EVANS 749-865
  - D-114 ~ D.L. & H.C. BOOHER 760-4
- BLDG. 32: VOL. 15 - PG. 91
  - A-152 ~ D.C. & R.G. SHINER 751-884
  - D-154 ~ W.K. OLIVIER 751-554

- AUBURN LAKES CONDO - WINDWAY #41 (PRIVATE):
  - W-1: VOL. 15 - PG. 1
    - A-66 ~ M.H. LAVIN 718-161
  - W-2:
    - A-60 ~
    - B-62 ~
    - C-60 ~
  - W-3: VOL. 14 - PG. 110 - 115
    - A-54 ~ P. D. GLAS 706-814
    - B-52 ~ W.J. RINI 700-427
  - W-4: VOL. 14 - PG. 110 - 115
    - A-50 ~ D. BOLEN 718-1127
    - B-48 ~ D.O. RIETHMILLER 705-649
  - W-5:
    - A-58 ~
    - B-56 ~
  - W-6: VOL. 15 - PG. 1
    - A-46 ~ D.J. MAYR 718-203
    - B-44 ~ MARG. L. RUS 735-1232
    - C-42 ~ T.L. & L.M. MUSHRUSH 748-209
  - W-7: VOL. 14 - PG. 72
    - A-40 ~ E. KRAMES 703-314
    - B-38 ~ H. EPPACHT 700-1300
    - C-36 ~ J.N. & C. HOLYLAND 714-720
  - W-8: VOL. 14 - PG. 130 - 136
    - A-34 ~ R. S. MERRIAN 715-102
    - B-32 ~
  - W-9: VOL. 14 - PG. 72 (WINDWARD WAY)
    - A-30 ~ D.S. JERZBAK 713-468
    - B-28 ~ W.H. THOMPSON 710-24
    - C-26 ~ CAROL L. MORTER 733-1931
  - W-10: VOL. 14 - PG. 110 - 115
    - A-24 ~ J.A. & S.M. KALISCH 703-221
    - B-22 ~ K.D. WERNER 707-1185
    - C-20 ~ H.H. WIELAND 77-745; 743-263
  - W-11: VOL. 14 - PG. 130 - 136
    - A-18 ~ M.L. VITALE 716-1317
    - B-16 ~
  - W-12: VOL. 14 - PG. 72
    - A-14 ~ R.J. SCULLI 701-737
    - B-12 ~ D.C. ROOY 799-1117
    - C-10 ~ STEPH. M. & CHARLOTTE T. GUN 727-160
  - BLDG. 21: VOL. 14 - PG. 124 / VOL. 15 - PG. 21
    - A-100 ~ V.L. MCKEE 749-1210
    - B- ~ R.R. REMLEY JR. 750-645
    - C-104 ~ W.L. RUSIUS 757-150
  - BLDG. 20: VOL. 14 - PG. 141 - 144
    - A- ~ MAX & ANNE WILSON 719-881
    - B- ~ R.G. ROBERTS 716-97
  - BLDG. 34: VOL. 15 - PG. 1
    - A- ~ G.M. HARTLEY 793-647
    - B- ~ LEADCO ASSOCIATES 734-1259
    - C- ~ RICHARD J. & CAROL J. SAMP 736-377
  - UNIT 15: VOL. 15 - PG. 17 (COVE COURT)
    - A-74 ~ T.D. & D.R. CLARK 765-634
    - B- ~ ROBERT J. KUEHLER 739-730
    - C- ~ LEADWORKS, INC. 723-131
  - Unit 19: Vol 15 pg 27
    - A- ~ Barbara Marie Dima 724-757
    - B- ~ J. Jacqueline Mayer 726-373
    - 726-1081
  - BLDG. (UNIT) 14: VOL. 15 - PG. 45 TO 52
    - A-68 ~ C.J. & A.D. MCBRIDE 749-652
    - B- ~ THOMAS & GLORIA CHASE 728-1257
    - C- ~ DONALD & DONIS WISE 730-344
  - UNIT 28 Vol 15-56
    - A- Douglas & Barbara Coad 750-452
    - B- Harold B. & Shirley D. Marx 733-497
  - UNIT 44 Vol 15 pg 60-67
    - A Robert & Geraldine M. Verhaar 734-1265
  - UNIT 29: VOL. 15 - PG. 60 (S. PINTRAIL)
    - A- ~ JOEL J. & KATHA L. LIPMAN 736-727
    - B-144 ~ T.W. & B.L. WINTER 763-211
  - UNIT 17: VOL. 15 - PG. 91 (CLUB LANE)
    - A-84 ~ T.G. KUNNLE 757-1026
    - B-86 ~ S. THOMPSON 771-867
    - C-88 ~ H.T. FAY 748-810

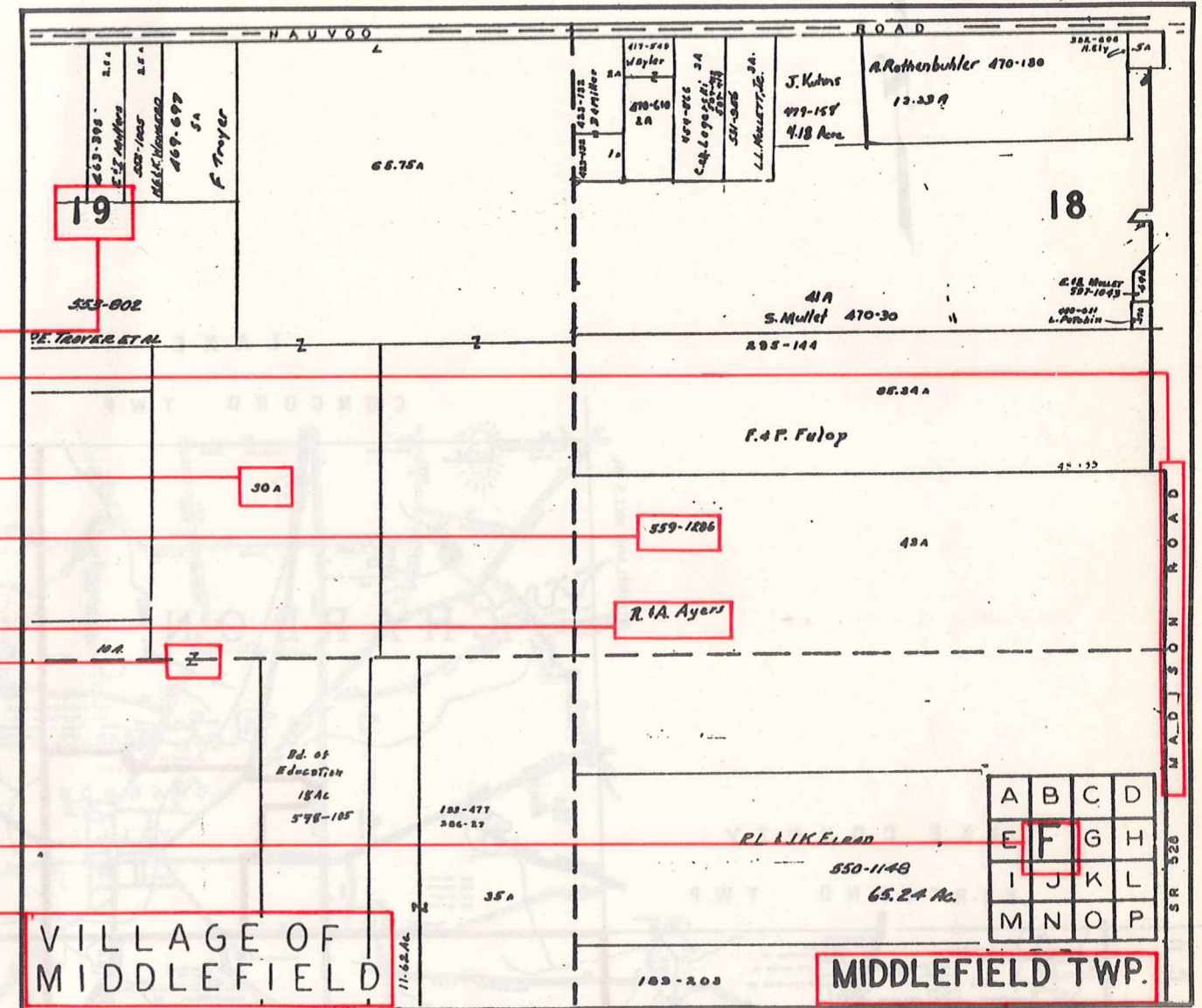
# Explanation and Use Sheet for Geauga County, Ohio

SAMPLE (PARTIAL) COUNTY INDEX MAP



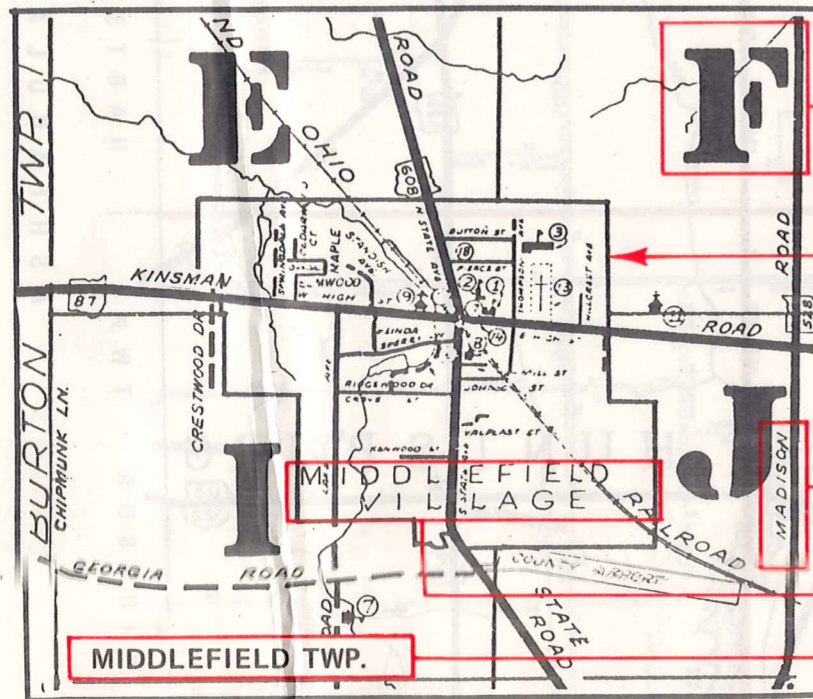
- Township Boundary
- Township Name
- Village Boundary
- Village Name
- Tract Lot Number
- Street Name
- Acreage
- Deed Book & Page
- Owners Name
- Denotes Continous Ownership

SAMPLE (PARTIAL) MAP PAGE



- Map Page Number
- Village Name
- Village Boundary
- Township Name

SAMPLE (PARTIAL) MUNICIPALITY INDEX MAP



- Street Name
- Village Name
- Township Name

## USE OF THE MAP VOLUME

1. LOCATE THE GENERAL AREA OF INTEREST ON THE COUNTY INDEX MAP, ATLAS PAGE 'B', AND NOTE THE MUNICIPALITY NAME (TOWNSHIP OR VILLAGE).
2. REFER TO THE TABLE OF CONTENTS, ATLAS PAGE 'C', AND NOTE THE BEGINNING ATLAS PAGE NUMBER FOR THE MUNICIPALITY OF INTEREST.
3. TURN TO THE PAGE INDICATED. ON THIS PAGE WILL APPEAR AN INDEX MAP FOR THAT MUNICIPALITY.
4. LOCATE THE GENERAL AREA OF INTEREST AND NOTE THE MAP PAGE NUMBER. THIS MAY BE EITHER A LETTER OR A NUMBER.
5. MAP PAGES ARE IN ALPHABETICAL (OR NUMERICAL) SEQUENCE FOLLOWING THE MUNICIPALITY INDEX MAP. FOLLOW SEQUENCE TO THE MAP PAGE INDICATED.
6. LOCATE SPECIFIC PARCEL OF INTEREST AND NOTE THE DESIRED INFORMATION.

NOTE: ON SOME MAPS YOU MAY BE REFERRED TO A DETAIL SHEET SHOWING AN ENLARGEMENT OF THE AREA. THESE MAPS ARE FOUND AT THE END OF THE REGULAR MAP PAGES IN EACH MUNICIPALITY IN EITHER ALPHABETICAL OR NUMERICAL SEQUENCE.

NOTE: CHARDON VILLAGE HAS TITLE SHEETS. TO LOCATE OWNERS NAME, NOTE THE PARCEL NUMBER, REFER TO THE TITLE PAGE FOLLOWING THE MAP OF INTEREST, FOLLOW NUMERICAL SEQUENCE TO THE PARCEL NUMBER OF INTEREST AND NOTE THE DESIRED INFORMATION. IN ALL OTHER MUNICIPALITIES THE OWNERS NAME APPEARS ON THE MAP PAGE.

This book is the property of REAL ESTATE DATA, INC. and is distributed by REDI under a leasing arrangement requiring return to REDI upon termination of the lease. REDI reserves the right to reclaim this book if found in the possession of any firm or person where possession was obtained through any unauthorized source.